

# Schuyler Insurance and Real Estate

1107 'B' St.

Schuyler, NE 68661

402-352-3922

[www.schuylerinsurance.com](http://www.schuylerinsurance.com)

## 315 West 9th Street Schuyler

Glen P Jedlicka—Broker

Office: 402-352-3922

Cell: 402-615-2197

[glenjed@qwestoffice.net](mailto:glenjed@qwestoffice.net)



Information herein believed to be accurate but not guaranteed

City	Address	Price	Sq. Footage
Schuyler	315 West 9th St	\$225,000.00	1671
Lot size	No. of Bedrooms	No. of Bathrooms	Garage
66' x 132'	4	2	detached

General Info	
Possession	upon closing
Terms	cash
Taxes (2022)	\$2,027.82
Type of Heat	gas
Water Heater	gas
Flood Plain	Yes
Year Built	1900

Room Dimensions	
Living Room	10' 10" x 12' 6"
Dining Room	10' 6" x 13'
Kitchen	9' 6" x 12' 8"
Family Room	14' 2" x 14' 6"
Main Bedroom	11' 2" x 12' 9"
Bath #1	6' 6" x 8' 6"
Bath #2	down
Bedroom #2	11' 2" x 12' 10"
Bedroom #3	11' 6" x 12' 10"
Bedroom #4	10' 6" x 11' 2"
Utility Room	4' 9" x 11' 4"
Basement	partial finish
Garage	14' 9" x 22'

Add'l Information	
Carpet	Yes
Drapes	Yes
Softener	Yes
Disposal	Yes
Dishwasher	Yes
Central Air	Yes
City Water	Yes
City Sewer	Yes
Paved Streets	Yes
Septic Tank	No

Legal Description	Seller Notes:
E 1/2 of Lot 7 & 8, Block 5, Clarkson 1st Addition, City of Schuyler Colfax County, NE	Well maintained home, lots of character All appliances stay, underground sprinklers close to churches & middle school Call Today!!

# Schuyler Insurance and Real Estate

1107 'B' St.

Schuyler, NE 68661

402-352-3922

[www.schuylerinsurance.com](http://www.schuylerinsurance.com)

## 315 West 9th Street Schuyler

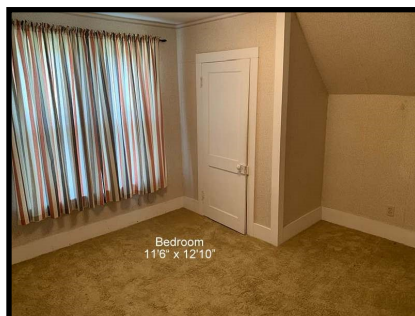
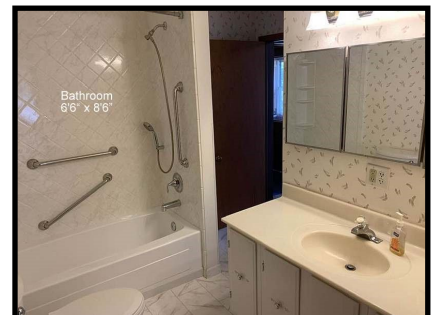
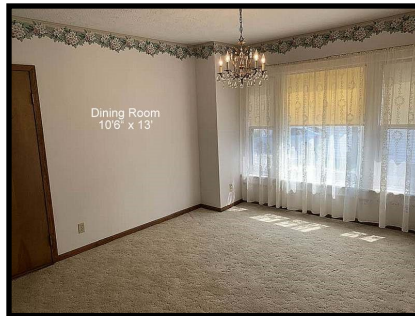
Glen P Jedlicka—Broker

Office: 402-352-3922

Cell: 402-615-2197



Information herein be-  
lieved to be accurate but  
not guaranteed



# Schuyler Insurance and Real Estate

1107 'B' St.

Schuyler, NE 68661

402-352-3922

[www.schuylerinsurance.com](http://www.schuylerinsurance.com)

## 315 West 9th Street Schuyler

Glen P Jedlicka—Broker

Office: 402-352-3922

Cell: 402-615-2197



Information herein believed to be accurate but not guaranteed

